

SELF-COUPLING H2''



DESCRIPTION	EZ
BF2R 2"X2"	2/7389
BF2R 4"X2"	2/7248
BF2R 6"X2"	2/7249
BF2R 8"X2"	2/7250
BF2R 12"X2"	2/7251
BF2R 16"X2"	2/7394
BF2R 20"X2"	2/7395
BF2R 24"X2"	2/7396

SELF-COUPLING H4''

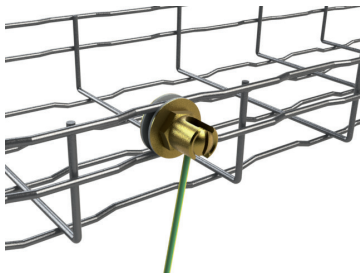


DESCRIPTION	EZ
BF2R 4"X4"	2/7914
BF2R 8"X4"	2/7397
BF2R 12"X4"	2/7398
BF2R 16"X4"	2/7399
BF2R 20"X4"	2/7400
BF2R 24"X4"	2/7401

SELF-COUPLING



GROUND CONNECTION

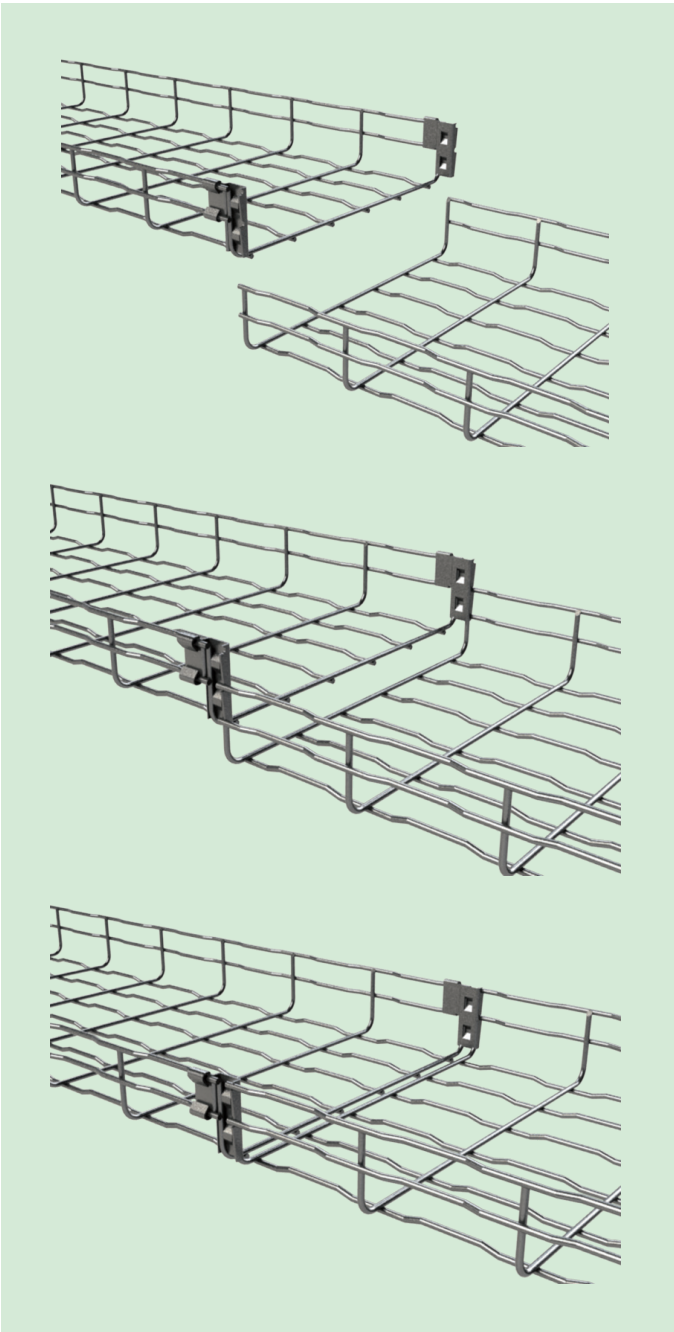


BASORFIL BF2R EZ, SS304L, SS316L

Assembly instructions



- 1. Place the first cable tray over the second.
- 2. Apply pressure until it clicks.



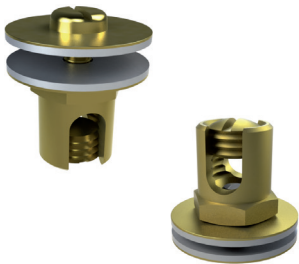
MODEL		WING	BASE
60x65	2"x2"	2 (1 each side)	0
100x65	4"x2"	2	0
150x65	6"x2"	2	0
200x65	8"x2"	2	0
300x65	12"x2"	2	1
400x65	16"x2"	2	1
450x65	18"x2"	2	1
500x65	20"x2"	2	1
600x65	24"x2"	2	1
100x105	4"x4"	2	0
200x105	8"x4"	2	0
300x105	12"x4"	2	1
400x105	16"x4"	2	1
450x105	18"x4"	2	1
500x105	20"x4"	2	1
600x105	24"x4"	2	1

GROUND CONNECTION

To comply with NEC specifications to use BFR/BF2R/E-BFR wire-mesh cable trays as ground conductor, the following models are supplied with ground connection clamps and with an additional ground connection wire 10AWG:

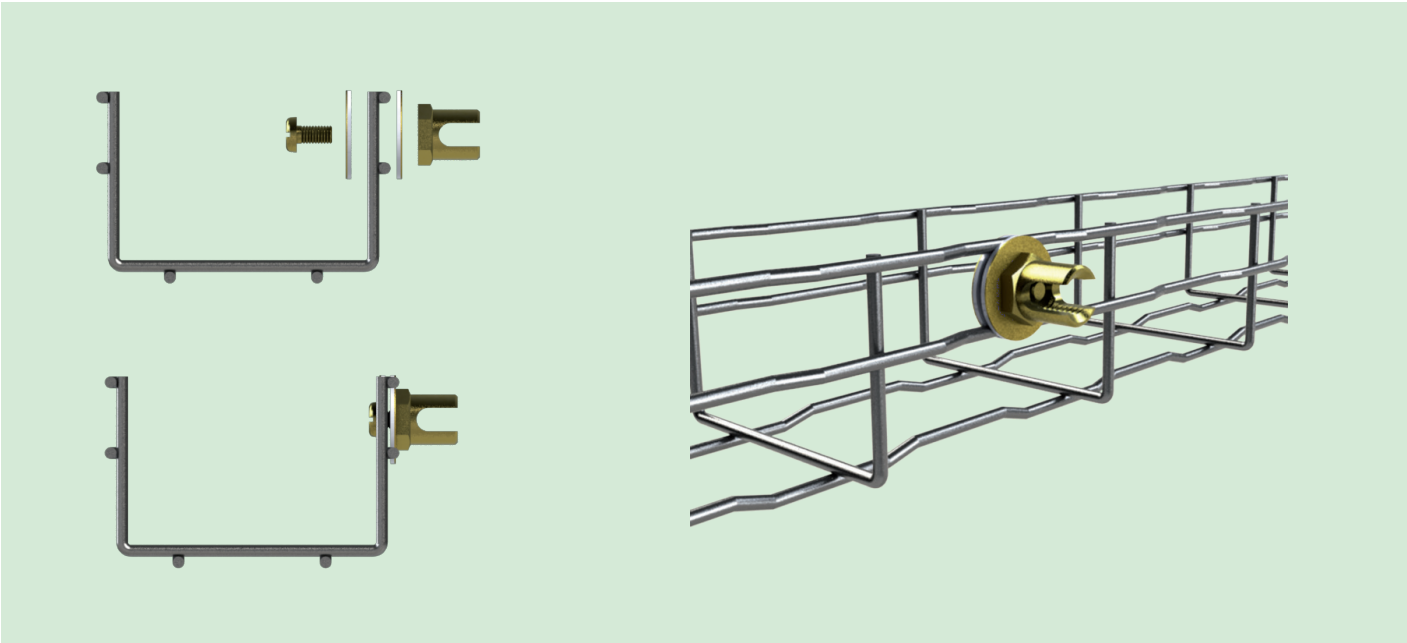
GROUND CONNECTION CLAMP

DESCRIPTION	Smax		BRASS		
	inch2	mm2	REF.	kg/ud	LBS/unit
GCC 35 M6x0,47"	0,054	35	2/6796	0,04	0,088
GCC 95 M6x0,47"	0,147	95	2/6797	0,07	0,154



WIDTH		HEIGHT	
(mm)	inch	(mm)	inch
100	4"	35	1" 1/2
150	6"	35	1" 1/2
200	8"	35	1" 1/2
300	12"	35	1" 1/2
60	2"	65	2"
100	4"	65	2"
150	6"	65	2"
200	8"	65	2"
100	4"	105	4"

- To assembly the clamps and wires to a tray of 65 mm / 2 inches height (2 wires in the wing) follow these steps:
- a. Place the ground clamp with the two washers hugging the two wires of the wing of the tray applying 4 Nm torque.



BASORFIL BF2R EZ, SS304L, SS316L

Assembly instructions



- b. Place one ground clamp as shown every 3 m / 10 ft (one ground clamp per wire-mesh cable tray piece)
- c. Introduce the ground wire into the hole of the ground clamp and make pressure with the rounded nut (4 Nm torque).

